



# COMPANY PROFILE

CORPORATE PROFILE PRESENTATION

---

**PT. BHARATA ANUGERAH NUSANTARA**

OIL AND GAS - TIRE DISTRIBUTOR - BUILDING MATERIAL

A TRUSTED PARTNER

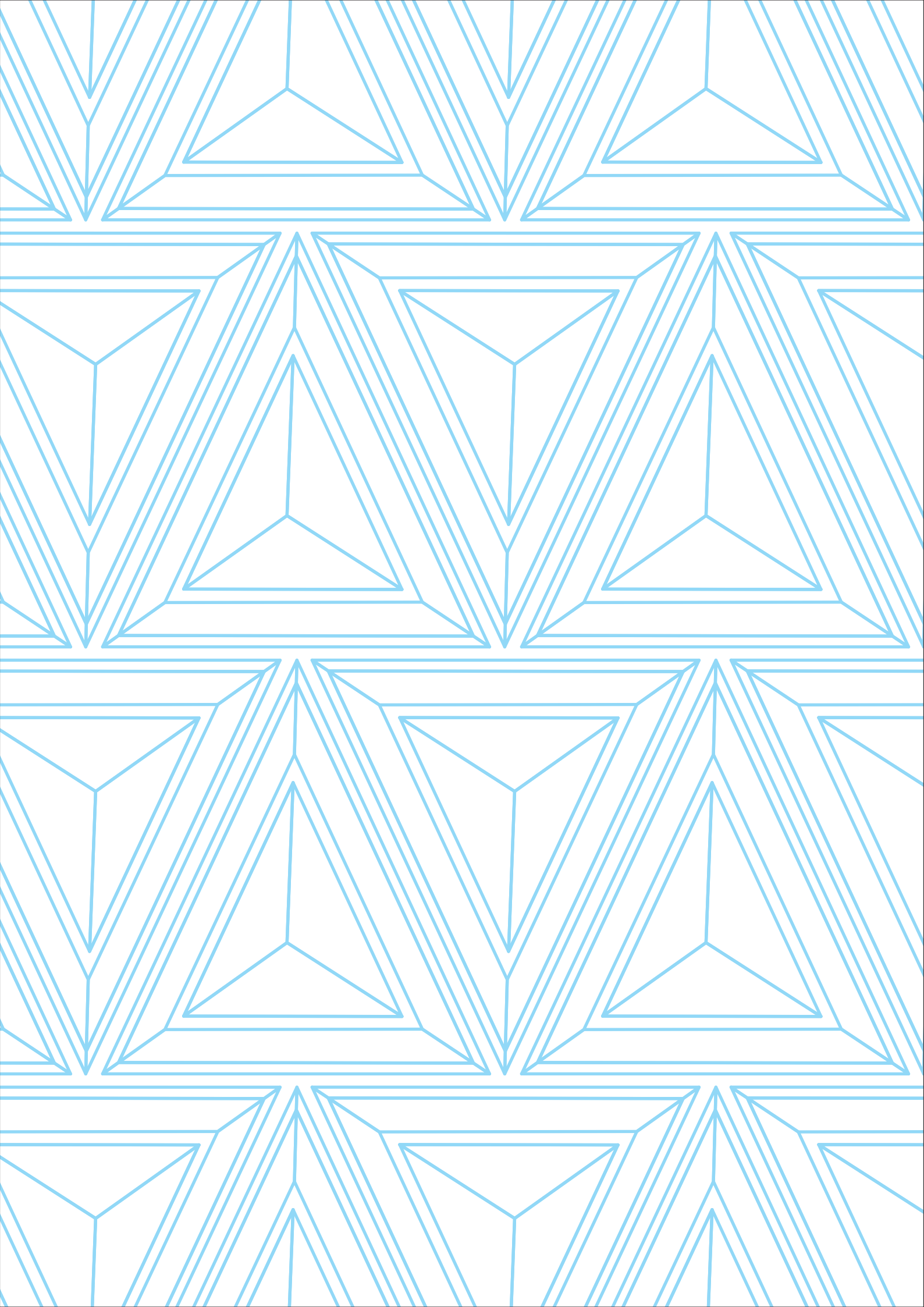


Copyright © 2021 by PT. BHARATA ANUGERAH NUSANTARA  
All rights reserved. No part of this publication may be produced or transmitted  
in any form by any means, electronic or mechanical, including photocopying,  
recording or any information storage on retrieval system, without written  
permission from the publisher and the copyright owners, except in the case of  
educational purposes. For more information, contact PT. BHARATA ANUGERAH NUSANTARA.

Printed in Indonesia

First Printing, 2021

PT. BHARATA ANUGERAH NUSANTARA  
Sudirman Central Business District (SCBD) Lot 28,  
Jl. Jend. Sudirman Kav. 52-53, Kebayoran Baru,  
Jakarta Selatan - 12190, Indonesia  
Phone: +62-21-29333599 (Hunting)  
Fax: +62-21-29333598





BHARATA  
**ANUGERAH**  
NUSANTARA  
A TRUSTED PARTNER



# ABOUT US

The forerunner to the establishment of PT. Bharata Anugerah Nusantara which is abbreviated as PT BAN originated from the existence of interesting business opportunities and challenges as well as a very wide market both from within and outside the country. To answer these challenges and opportunities, PT BAN was established on April 1, 2019.


As for the reason for the establishment of PT BAN in addition to participating in creating jobs, especially in the Republic of Indonesia, it also contributes to the development of the archipelago by providing several building materials, Oil and Gas and fulfilling the need for high quality tires.

PT. Bharata Anugerah Nusantara is engaged in several types of business fields, including: Domestic and foreign Oil & Gas Traders, Suppliers of building materials, especially domestic and distributors of high quality CST brand tires imported from Taiwan and ANSU brand tires from China.

---

In the current era of very rapid globalization, PT. Bharata Anugerah Nusantara is here and determined to face challenges in formulating various distribution concepts for several reliable and high-quality products so that they are easy to absorb by the market, we are also committed to always providing excellent service to all our customers

Supported by highly qualified and experienced human resources, PT. Bharata Anugerah Sejahtera is increasingly established in enhancing its existence in the business world both at home and abroad. In realizing this commitment, the management has launched several things, namely quality management, quality product service, excellent distribution consistency and professionalism in handling and solving problems.



# CONTENTS

BHARATA ANUGERAH NUSANTARA	<b>01</b>
ORGANIZATION STRUCTURE	<b>03</b>
OUR DREAM	<b>04</b>
OUR MISSION	<b>06</b>
CORPORATE VALUE	<b>08</b>
WHY CHOOSE US	<b>10</b>
STRATEGY	<b>11</b>
OUR PRODUCTS	<b>12</b>
POLICIES	<b>18</b>
COMPANY LEGALITY	<b>20</b>
OUR CLIENTS	<b>23</b>
CONTACTS	<b>25</b>



# BHARATA ANUGERAH NUSANTARA

Referred to huge opportunity an oil and gas, tire distributor and building material then to contributed in the world. Its started with a small group of professionals focusing mainly in the consultancy and advisory services in niche market projects in technical, financial and legal aspects of petroleum, minerals, tires distributor, building materials and a wide range of related industries.

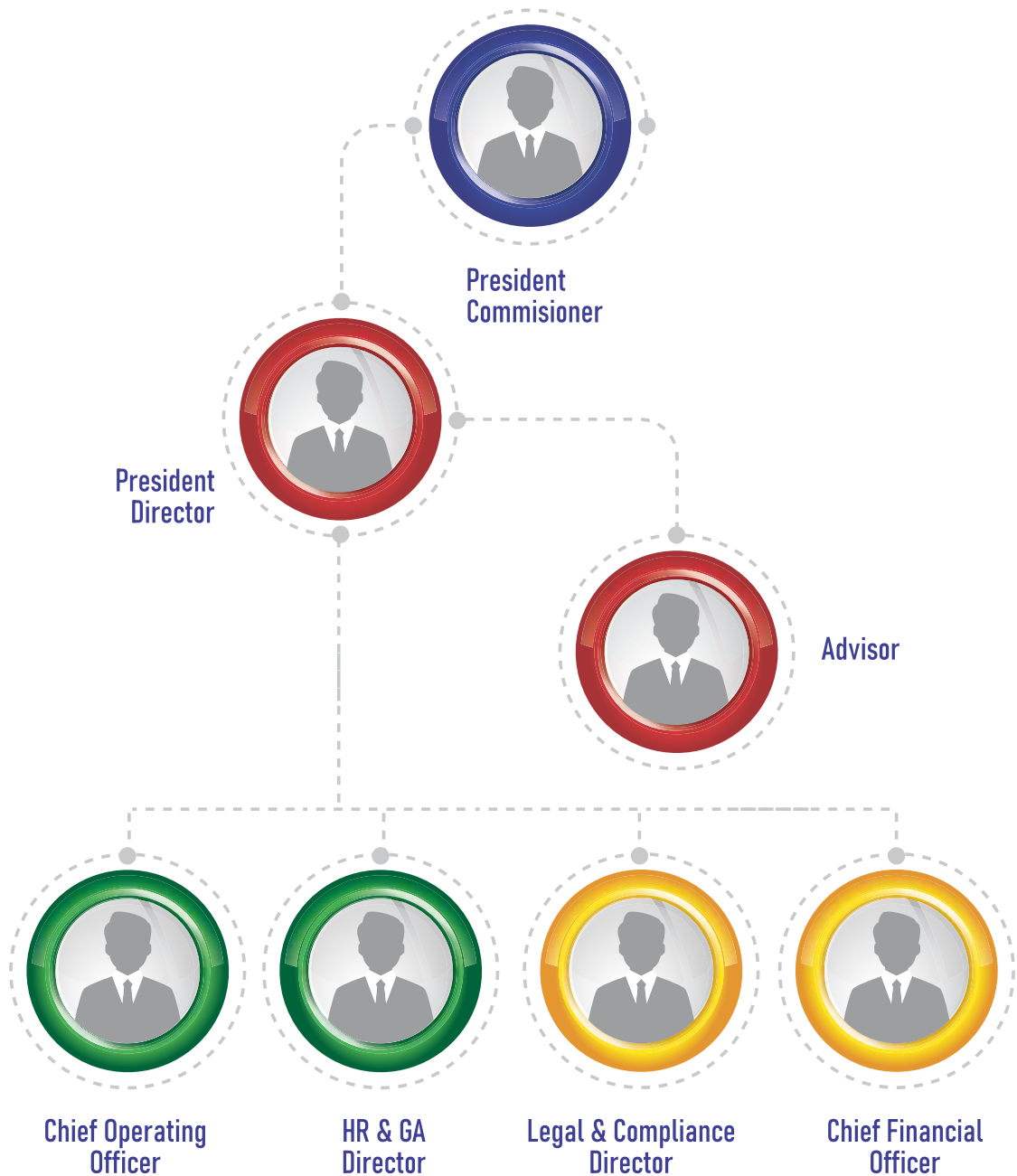
The company expanded rapidly with its subsidiaries and affiliates worldwide and through associations and alliances to offer various oil, gas and mining services and trading in refinery product then since April 2019 PT. BHARATA ANUGERAH NUSANTARA born with focusing and specialize for Oil and Gas Trading, tired distributor and building materials company.

From this time on and from the time of inception of the new services, it garnered the trust of the business community and its clients





# ORGANIZATION STRUCTURE





# OUR DREAM



**TO BE A WORLD  
CLASS LEADING  
AND MOST  
TRUSTED COMPANY**

# OUR MISSION

- Providing excellent service to every customer and selling quality products by maximizing added value through best industry practices and superior operations
- Providing optimum benefits for shareholders, employees and society as well as caring for the environment
- Managing the company with good corporate governance and operational excellence supported by professional human resources



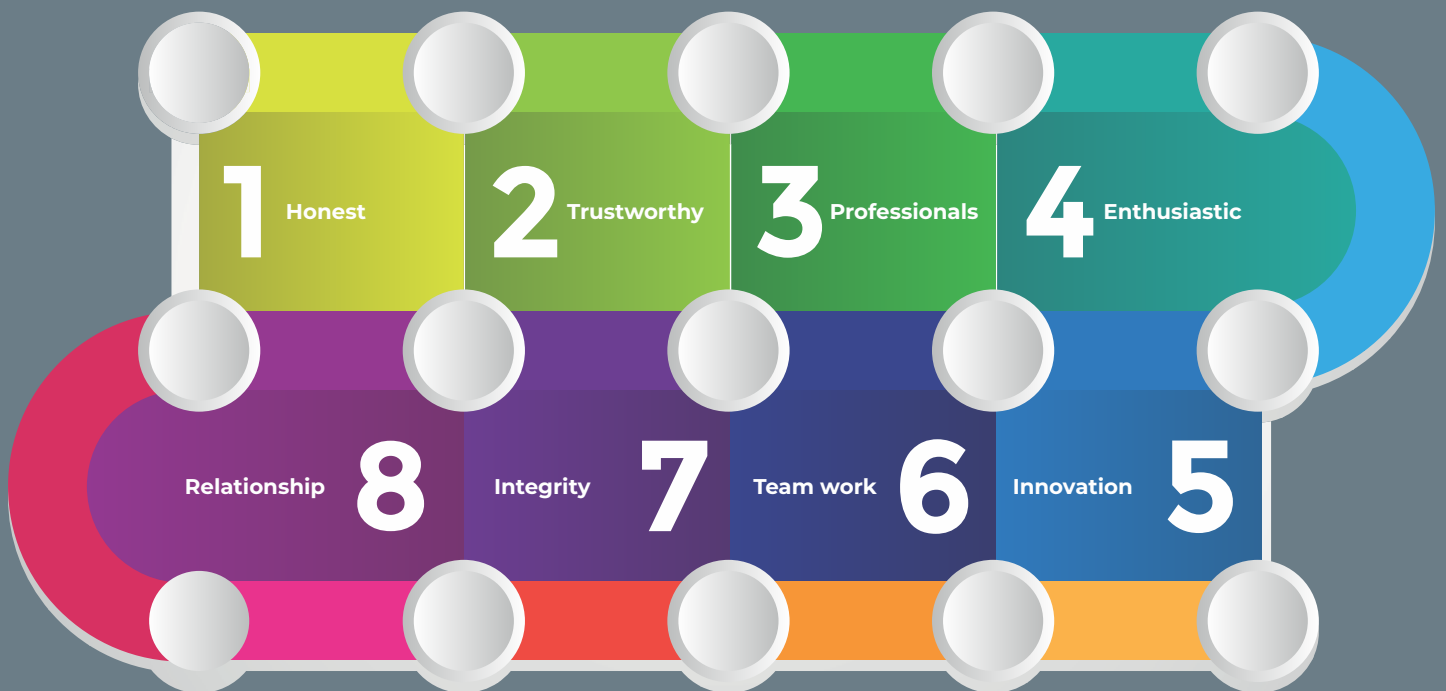
Creating mutual benefits for consumers, investors and employees





# CORPORATE VALUE

# CORPORATE VALUE



In maintaining quality and customer satisfaction,  
we apply values that are able  
to encapsulate all of them in values:

**Honesty, Trust, Professional  
Enthusiastic, Innovation, Team Work  
Integrity, and Good relationship  
with customers and investors**



# WHY CHOOSE US

PT. Bharata Agugerah Nusantara is committed to growing and advancing with customers by implementing continuous improvements to its products and services, and tough in making strategies to face challenges in the future.



EXPERIENCE



AUTHORIZED



INTEGRITY



A TRUSTED PARTNER



PRODUCT AND SOLUTIONS



TEAM WORK



## EXPERIENCE

PT. Bharata Anugerah Nusantara, a company with experienced of oil and gas business, Tires distribution and Building Material supplier

## AUTHORIZED

PT. Bharata Anugerah Sejahtera has official appointed as Tire distributor with brand of CST from Taiwan and others Tire import as well from China. For Oil and Gas we have direct contact to Refinery as a Trader company then continue with building material sources from manufactures

## INTEGRITY

A good reputation is our core strength, we believe in the importance of building trust through honest and respectful business conduct.

## A TRUSTED PARTNER

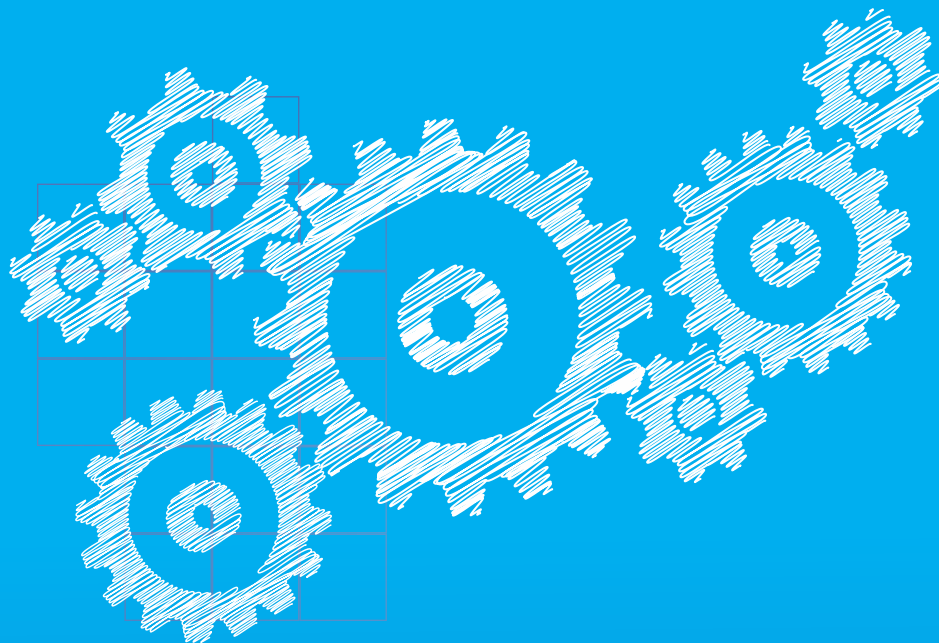
PT. Bharata Anugerah Nusantara is committed to be a company that customers can trust in terms of selling high quality products.

## PRODUCT & SOLUTIONS

PT. Bharata Anugerah Nusantara does not only sell products but also provides the best solutions to meet the needs of its customers.

## TEAM WORK

Human are our most important asset, we believe in creating a dynamic work environment that provides limitless learning and experiences



# STRATEGY

We run a business by implementing a strategy that can unite customer satisfaction and company targets through:

***Clear project, project priorities***

***Actively managing and running a business properly***

***By balancing capabilities between human resources and technology***

# OUR BUSINESS

---



**TIRE DISTRIBUTOR**



**OIL & GAS**

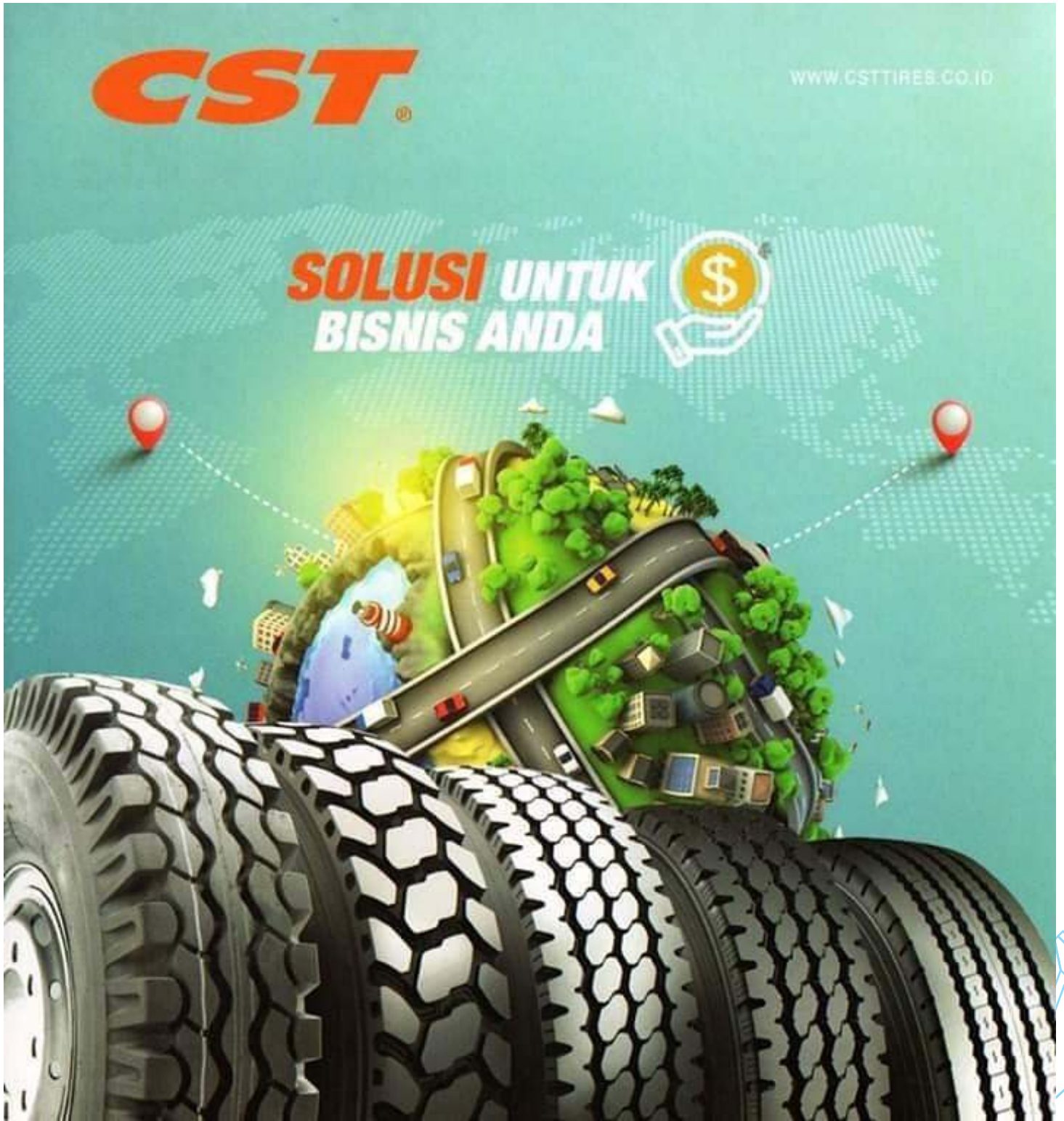


**BUILDING MATERIALS**



# TIRE DISTRIBUTOR

Tire Distributor CST Brand



# TIRE DISTRIBUTOR

## Tire Distributor CST Brand

### TRUCK & BUS BIAS TIRES

Tire Size	Ply Rating	Type TT/TL	Overall Diameter (mm)	Section Width (mm)	Max Pressure (kg/cm <sup>2</sup> )	Max. Load (kg/ty)	Max. Rim Width (in)	Tread Depth (mm)
16.00R20 18.00R22	14/16	TT	1663	319	0.023/0.027 0.024/0.028	32000/36000 36000/40000	8.50	24.4
17.00R20 18.00R22	14/16	TT	1700	332	0.024/0.028 0.025/0.029	32000/36000 36000/40000	8.50	25.4

**CT36**

Tire Size	Ply Rating	Type TT/TL	Overall Diameter (mm)	Section Width (mm)	Max Pressure (kg/cm <sup>2</sup> )	Max. Load (kg/ty)	Max. Rim Width (in)	Tread Depth (mm)
16.00R20 18.00R22	14/16	TT	1667	320	0.023/0.027 0.024/0.028	32000/36000 36000/40000	7.50	27.0
17.00R20 18.00R22	14/16	TT	1707	333	0.024/0.028 0.025/0.029	32000/36000 36000/40000	8.50	28.0

**C8808**

Tire Size	Ply Rating	Type TT/TL	Overall Diameter (mm)	Section Width (mm)	Max Pressure (kg/cm <sup>2</sup> )	Max. Load (kg/ty)	Max. Rim Width (in)	Tread Depth (mm)
17.00R20 18.00R22	14/16	TT	1717	312	0.023/0.027 0.024/0.028	32000/36000 36000/40000	8.50	26.0
18.00R20 18.00R22	14/16	TT	1822	341	0.024/0.028 0.025/0.029	32000/36000 36000/40000	7.50	26.0
19.00R20 19.00R22	14/16	TT	1928	377	0.024/0.028 0.025/0.029	32000/36000 36000/40000	7.50	26.0
21.00R20 21.00R22	14/16	TT	1980	387	0.024/0.028 0.025/0.029	32000/36000 36000/40000	8.50	26.0

**C846**

CERTIFICATE OF QUALITY :

# SOLUSI TRUCKING ANDA

## TRUCK & BUS TIRES

### TRUCK & BUS RADIAL TIRES

**TIRE SIZE 7.50R16**

Tire Size	Ply Rating	Type TT/TL	Overall Diameter (mm)	Section Width (mm)	Max Pressure (kg/cm <sup>2</sup> )	Max. Load (kg/ty)	Max. Rim Width (in)	Tread Depth (mm)
7.50R16 12.1/12.1L	14	TT	812	214	0.020/0.022 0.021/0.023	10000/11000 11000/12000	4.00L	14.2

**CR969**

Tire Size	Ply Rating	Type TT/TL	Overall Diameter (mm)	Section Width (mm)	Max Pressure (kg/cm <sup>2</sup> )	Max. Load (kg/ty)	Max. Rim Width (in)	Tread Depth (mm)
7.50R16 12.1/12.1L	14	TT	808	216	0.020/0.022 0.021/0.023	10000/11000 11000/12000	4.00L	11.3

**CR189**

Tire Size	Ply Rating	Type TT/TL	Overall Diameter (mm)	Section Width (mm)	Max Pressure (kg/cm <sup>2</sup> )	Max. Load (kg/ty)	Max. Rim Width (in)	Tread Depth (mm)
10.00R13 14.00R16	16	TT	1022	276	0.028/0.032 0.030/0.034	15000/17000 17000/19000	7.0	14.3
11.00R13 14.00R16	16	TT	1022	288	0.028/0.032 0.030/0.034	15000/17000 17000/19000	8.25	14.3

**CR189+**

Tire Size	Ply Rating	Type TT/TL	Overall Diameter (mm)	Section Width (mm)	Max Pressure (kg/cm <sup>2</sup> )	Max. Load (kg/ty)	Max. Rim Width (in)	Tread Depth (mm)
11.00R13 14.00R16	16	TT	1022	276	0.028/0.032 0.030/0.034	15000/17000 17000/19000	7.0	14.3
11.00R13 14.00R16	16	TT	1022	288	0.028/0.032 0.030/0.034	15000/17000 17000/19000	8.25	14.3

**CR969+**

Tire Size	Ply Rating	Type TT/TL	Overall Diameter (mm)	Section Width (mm)	Max Pressure (kg/cm <sup>2</sup> )	Max. Load (kg/ty)	Max. Rim Width (in)	Tread Depth (mm)
11.00R13 14.00R16	16	TT	1018	278	0.028/0.032 0.030/0.034	15000/17000 17000/19000	8.25	14.5
11.00R13 14.00R16	16	TT	1018	278	0.028/0.032 0.030/0.034	15000/17000 17000/19000	8.25	14.5

**CR307**

Tire Size	Ply Rating	Type TT/TL	Overall Diameter (mm)	Section Width (mm)	Max Pressure (kg/cm <sup>2</sup> )	Max. Load (kg/ty)	Max. Rim Width (in)	Tread Depth (mm)
11.00R13 14.00R16	16	TT	1003	292	0.028/0.032 0.030/0.034	15000/17000 17000/19000	8.0	23.4
11.00R13 14.00R16	16	TT	1003	292	0.028/0.032 0.030/0.034	15000/17000 17000/19000	8.0	23.4
12.00R13 14.00R16	30	TT	1046	314	0.035/0.040 0.036/0.041	20000/22000 22000/24000	8.5	28.7

# TIRE DISTRIBUTOR

Tire Distributor ANSU Brand

  @AnsuTires

## ANSU

PRODUCT  
TRUCK & BUS TIRES



ANSU  
TRUCK & BUS TIRES

 0089 - 2012  
0100 - 2012

SAATNYA GANTI BAN  
SEKARANG JUGA!!!

## ANSU

PRODUCT  
TRUCK & BUS TIRES

  @AnsuTires



### BS28



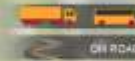
Ban serbaguna untuk kondisi jalan basah, kering, dan berlumpur.

7.50R16 | 10.00R20 | 11.00R20

- Ketahanan dalam segala medan berat maupun cuaca ekstrem.  
- Lapisan anti bodi dan manik yang tinggi mampu menahan kapasitas muatan lebih.  
- Desain alur dengan sudut besar dan tiga alur mencegah batu bersarang di tapak, efektif mengurangi hambatan gulir, dan memiliki kemampuan anti slip tinggi.



### BS18



Ban serbaguna untuk meningkatkan pengendalian dan stabilitas yang sangat baik.

7.50R16 | 10.00R20 | 11.00R20

- Memberikan akselerasi maksimal dalam kecepatan tinggi.  
- Ketahanan aus yang lebih baik menjadikan jarak tempuh lebih panjang.  
- Jarak tempuh lebih panjang dengan pola zigzag vertikal tapak tengah yang memberikan cengkraman lebih baik sehingga membuat kinerja kontrol lebih aman.



### BY06



Ban serbaguna untuk kondisi jalan pada lokasi tambang berkonstruksi.

10.00R20 | 11.00R20 | 12.00R20

- Matriks enkripsi kekuatan tinggi anti ledakan dan memperpanjang usia pakai ban.  
- Lapisan anti bodi dan manik yang tinggi mampu menahan kapasitas muatan lebih.  
- Alur yang diperdalam dapat membuat ban memiliki jarak tempuh yang panjang dan keausan yang seimbang.



### BYS98+



Ban dengan stabilisasi tinggi pada area jalan tol luar dan dalam kota.

11R22.5 |

- Ketahanan aus yang dapat membuat ban memiliki jarak tempuh lebih panjang.  
- Memberikan akselerasi maksimal dalam kecepatan tinggi.  
- Desain tapak ban yang baik efektif mengurangi ketahanan bergulir dan mendapatkan kemampuan anti-slip yang tinggi dan kinerja kecepatan tinggi.



### BY35



Ban serbaguna sebagai gandar penggerak untuk on/off roads.

10.00R20 | 11.00R20

- Ketahanan dalam segala medan berat maupun cuaca ekstrem.  
- Desain pola cembung dan desain tapak khusus yang memiliki cengkraman yang sangat baik dan mencegah batu bersarang di tapak.  
- Formula anti-sobek dengan pola block dapat menyediakan tenaga chocking anti-collapse yang luar biasa.

#### Tabel Rekomendasi

Tyre Size	Ply Rating	Tyre Type	Standard Rim (inch)	Tekanan Angin (psi)
7.50R16	14PR	Tube Type	6	140
10.00R20	18PR	Tube Type	7.5	150
11.00R20	18PR	Tube Type	8.0	150
11R22.5	18PR	Tubeless	8.25	145
12.00R20	18PR	Tube Type	8.50	160

Untuk beban muatan standar\*

# OIL AND GAS





# BUILDING MATERIALS



# Company policies related to health, safety and environmental sustainability

Protecting human health, security and safety as well as protecting the environment are the core values of PT. Bharata Anugerah Nusantara in carrying out and developing its activities. .

With the aim of living the values in this Policy, the company has implemented an integrated, structured and dynamic

# "Health, Safety and Environment"

management system based on best practice and recognized national and international standards.





# COMPANY LEGALITY

<b>Akta Pendirian</b>	Akta No 6, tanggal 1 April 2019
<b>Akta Perubahan Terakhir</b>	Akta No 38 tanggal 1 6 November 2020.
<b>Pengesahan Kementerian Hukum dan HAM</b>	Nomor AHU-0078833.AH.01.02. Tahun 2020, tanggal 25 November 2020
<b>Nomor Induk Berusaha</b>	9120019182611
<b>Nomor Izin Lokasi</b>	Diterbitkan tanggal 27 November 2020
<b>Nomor Surat Keterangan Terdaftar Pajak</b>	S-4078KT/WPJ30/KP.0103/2019
<b>Nomor Pokok Wajib Pajak</b>	91.084.518.9-031.000



# OUR CLIENTS



CV.BINTANG LINTAS RAYA TRANSPORTASI

Support Your need  
transportation



**INDO SARANA  
JAYA PERKASA**



**PT CITRA MAKMUR ABADI INTERNASIONAL**

Head Office : Rental Kawasan Cluster The Breeze Blok B1 No.57 Serpong, Indonesia Serpong, Tangerang Selatan, Banten  
Branch Office : Jl. Raya Kuningbering Soreh No. 49 Cibeureumh Bojonegara, Serang, Banten  
Telp : 0811 648 499 Fax : 0271 82431042  
E-mail : cmaai@indosat.net.id



**PT. Indonesia Express**  
**PT. Trans Nusantara Citra**



**HAN LOGISTICS**

PT. HAN JAYA NUSANTARA

JL. Lodan Raya No.23A Jakarta Utara 021.69831589



**PT. METRO EXPRESSINDO LOGISTIK**  
**METRO EXPRESS**

INLAND, TRANSPORTATION, TRUCKING CARGO, LOGISTIK



**PT. ASSA TRANSPORT**





## Office 8, Level 21st Suite H

**Sudirman Central Business District (SCBD) Lot 28**

Jl Jend. Sudirman Kav. 52-53, Kebayoran Baru  
Jakarta Selatan - 12190, Indonesia  
Phone: **+62-21-29333599** (Hunting)  
Fax: **+62-21-29333598**



<http://www.bharataanugerahnusantara.com>



[operation@bharataanugerahnusantara.com](mailto:operation@bharataanugerahnusantara.com)  
[admin@bharataanugerahnusantara.com](mailto:admin@bharataanugerahnusantara.com)  
[bharataanugerah@gmail.com](mailto:bharataanugerah@gmail.com)



BharataCst



bharata\_cst



bharata\_cst

